

Capability Statement



**A Certified NYC
MWBE Business
FMS ID: 00047621**

**A Certified NYS
MWBE Business
Vender ID:
20315843**

Waterview Consulting Group Inc.

777 Westchester Avenue, #101
White Plains, NY 10604

(914) 433-1447

email: NYSMWBE@waterviewcoaching.com

www.waterviewcoaching.com

www.waterviewelm.com

Duns# 023282553



*Eriko Imaizumi-
Augustus, CEO*

Waterview Consulting Group Inc. supports management and employee development of global companies by providing eLearning course development, animation video creation, executive coaching and employee leadership training.

Waterview focuses on motivating and developing each employee to achieve peak performance, at any position, or assignment anywhere in the world.

CORE COMPETENCIES

❖ eLEARNING DEVELOPMENT

Custom Made eLearning Development: **Onboarding Programs; Employee Training and Education; Compliance and Operational Manual**

❖ CORPORATE TRAINING

Classroom-type training as well as live webinar training, for topics including:

Leadership; Management Skill; Cross Cultural Communication; Coaching Skill; Japanese Business Etiquette

**We are official training consultant for Honda Motors America for its Japanese suppliers.*

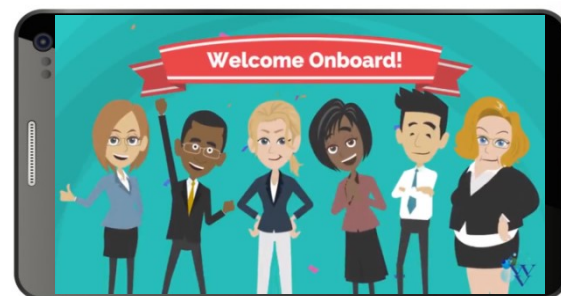
❖ EXECUTIVE COACHING

One-on-one coaching for topics including:

Leadership Development; Strategy Planning; Corporate Philosophy, Mission, Value Creation; Communication with Employees

❖ ANIMATION VIDEO PRODUCTION

Animated videos for marketing, websites, newsletters, business presentations and trade shows



*Scan this code to
watch our
company
video*

DIFFERENTIATORS

We Help Our Customers Achieve Their Goals

- High quality instructional design with high quality visuals with certified by the Association for Talent Development (ATD)
- Quick turn-around, low cost, and 2-hour reply policy customer service
- Meticulous and thorough testing for perfect product delivery
- Multi-lingual training provider and e-learning course developer (English, Japanese and other)
- A certified Founding Coach and a Fellow of the Institute for Independent Business (IIB), the largest consulting organization in the world in the UK.

NIGP CODES

92416, 92420

Training and Compliance

71547,71560

Training and Marketing

92435, 92460, 92464

Management/
Leadership Training

92435

Executive Coaching

PAST PERFORMANCE

❖ Shosen Koun

Developed 13-volume custom eLearning courses for harbor container terminal operation safety standards

❖ For Public for a fee

Developed 14-volume NYC Food Protection eLearning Course study guide

❖ Showa Denko America

Developed US Anti-Trust Law and FCPA eLearning courses tailored to the client company's actual business cases.

❖ Horizon GMI, Nissin Travel

Created promotional animation videos for marketing

❖ Major Clients (C=coaching, T=training, E=eLearning):

Honda Motor America (T), MDA Corporation, Canada (T), Mitsui Ocean Liners, USA+HK+Japan (C), Trapac USA (C), TOTO America (T), Kajima Design and Building America (C, T) Shosen Koun, Japan (E), Matsui America (C, T, E), Showa Denko America (C, T, E), Hotta Liesenberg and Saito LLP, USA (C, T), Dexerials America (C, T, E), Kaneka USA (C), and others



Mitsui O.S.K. Lines

Waterview Consulting Group Inc.

777 Westchester Avenue, #101., White Plains, NY 10604
(914) 433-1447 email: NYSMWBE@waterviewcoaching.com
www.waterviewcoaching.com www.waterviewelm.com
Duns# 023282553



Scan this code to visit our website